



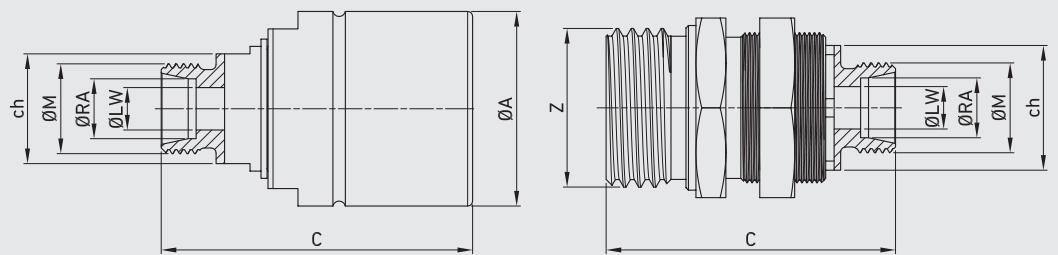
VGR

SCREW TO CONNECT COUPLINGS

Edition. 21.0

CS Carbon Steel

- Type: Quick Couplings
- Models: Screw-to-connect
- Sizes: from DN10 up to DN25
- Pressure: up to PN420





CODE DESCRIPTION STRUCTURE

QC	12S	F/M	DN12,5	1	B
----	-----	-----	--------	---	---

Type of coupling

Screw to connect couplings

Ends

ISO 8434-1-S (DIN 2353)	ISO 8434-1-L (DIN 2353)
12S	10L
16S	12L
20S	15L
25S	18L
38S	22L
	28L
	35L

MALE

FEMALE

DN/ISO

- 10
- 12,5
- 19
- 25

Body Material

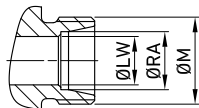
- 1 = 1,0737

Seal material

- B = NBR E = FKM*

*On request

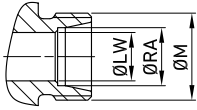
- Cups
 - Plugs
- with ball instead of poppet



SCREW-TO-CONNECT-COULPLINGS (male / female) MALE THREAD METRIC ISO 8434-1-S (DIN 2353)

Carbon Steel

TYPE	DN	PN	ØA	C	z	ch	ØM	ØLW	ØRA	WEIGHT	ITEM CODE	
QC VGR 10L MALE	10	MPa 42	mm 39	62,4		22	M16X1,5	8	10	kg 0,551	NC49L020000	
		Psi 6090	inch 1,54	2,46		0,00		0,87	0,31	0,39 1,21		
QC VGR 10L FEMALE		MPa 42	mm -	58		25	M16X1,5	8	10	kg 0,49	NC50L020000	
			Psi 6090	inch -	2,28	M32X3		0,98	0,31	0,39		0,55 1,08
QC VGR 15L MALE		MPa 42	mm 39	63,4		22	M22X1,5	12	15	kg 0,619	NC49L020001	
			Psi 6090	inch 1,54	2,50			0,00	0,87	0,47		0,59 1,36
QC VGR 15L FEMALE		MPa 42	mm -	59		25	M22X1,5	12	15	kg 0,435	NC50L020001	
			Psi 6090	inch -	2,32	M32X3		0,98	0,47	0,59		lb 0,96
QC VGR 15L MALE		12,5	MPa 42	mm 54,5	73,5		24	M22X1,5	12	15	kg 0,849	NC49L030000
			Psi 6090	inch 2,15	2,89		0,00		0,94	0,47	0,59 1,87	
QC VGR 15L FEMALE			MPa 42	mm -	64,7		32	M22X1,5	12	15	kg 0,655	NC50L030000
				Psi 6090	inch -	2,55	M36X3		1,26	0,47	0,59	
QC VGR 15L MALE	MPa 42		mm 66	79		32	M22X1,5	12	15	kg 1,061	NC49LA30000	
			Psi 6090	inch 2,60	3,11			0,00	1,26	0,47		0,59 2,34
QC VGR 15L FEMALE	MPa 42	mm -	75,2		32	M22X1,5	12	15	kg 0,911	NC50LA30000		
		Psi 6090	inch -	2,96	M48X3		1,26	0,47	0,59		lb 2,01	
QC VGR 18L MALE	MPa 42	mm 66	79		32	M26X1,5	15	18	kg 1,186	NC49LA30001		
		Psi 6090	inch 2,60	3,11			0,00	1,26	0,59		0,71 2,61	
QC VGR 18L FEMALE	MPa 42	mm -	75,2		32	M26X1,5	15	18	kg 1,036	NC50LA30001		
		Psi 6090	inch -	2,96	M48X3		1,26	0,59	0,71		lb 2,28	
QC VGR 18L MALE	MPa 42	mm 64	103		41	M26X1,5	15	18	kg 1,295	NC49L040000		
		Psi 6090	inch 2,52	4,06			0,00	1,61	0,59		0,71 2,85	
QC VGR 18L FEMALE	MPa 42	mm -	91		46	M26X1,5	15	18	kg 1,027	NC50L040000		
		Psi 6090	inch -	3,58	M54X4		1,81	0,59	0,71		lb 2,26	
QC VGR 22L MALE	MPa 42	mm 64	105		41	M30X2	19	22	kg 1,448	NC49L040001		
		Psi 6090	inch 2,52	4,13			0,00	1,61	0,75		0,87 3,19	
QC VGR 22L FEMALE	MPa 42	mm -	93		46	M30X2	19	22	kg 1,161	NC50L040001		
		Psi 6090	inch -	3,66	M54X4		1,81	0,75	0,87		lb 2,56	
QC VGR 28L MALE	MPa 42	mm 64	105		41	M36X2	24	28	kg 1,548	NC49L040002		
		Psi 6090	inch 2,52	4,13			0,00	1,61	0,94		1,10 3,41	
QC VGR 28L FEMALE	MPa 42	mm -	93		46	M36X2	24	28	kg 1,239	NC50L040002		
		Psi 6090	inch -	3,66	M54X4		1,81	0,94	1,10		lb 2,73	
QC VGR 35L MALE	25	MPa 42	mm 91,2	135		55	M45X2	30	35	kg 1,617	NC49L050000	
		Psi 6090	inch 3,59	5,31		0,00		2,17	1,18	1,38 3,56		
QC VGR 35L FEMALE		MPa 42	mm -	118,8		55	M45X2	30	35	kg 1,486	NC50L050000	
			Psi 6090	inch -	4,68	M79X4		2,17	0,00	1,38		lb 3,28



SCREW-TO-CONNECT-COUPPLINGS (male / female) MALE THREAD METRIC ISO 8434-1-S (DIN 2353)

CS
Carbon Steel

TYPE	DN	PN	ØA	C	z	ch	ØM	ØLW	ØRA	WEIGHT	ITEM CODE
QC VGA 12S MALE	10	MPa 42	mm 39	63,4		22	M20X1,5	8	12	kg 0,451	NC49H020000
		Psi 6090	inch 1,54	2,50		0,00		0,87	0,31	0,47 0,99	
QC VGA 12S FEMALE	10	MPa 42	mm -	59	M32X3	25	M20X1,5	8	12	kg 0,278	NC50H020000
		Psi 6090	inch -	2,32		0,98		0,31	0,47	0,55 0,61	
QC VGA 16S MALE	12,5	MPa 42	mm 54,5	75,5		24	M24X1,5	12	16	kg 0,57	NC49H030000
		Psi 6090	inch 2,15	2,97		0,00		0,94	0,47	0,63 1,26	
QC VGA 16S FEMALE	12,5	MPa 42	mm -	66,7	M36X3	32	M24X1,5	12	16	kg 0,338	NC50H030000
		Psi 6090	inch -	2,63		1,26		0,47	0,63	lb 0,75	
QC VGA 16S MALE	16	MPa 42	mm 66	81		32	M24X1,5	12	16	kg 0,65	NC49HA30000
		Psi 6090	inch 2,60	3,19		0,00		1,26	0,47	0,63 1,43	
QC VGA 16S FEMALE	16	MPa 42	mm -	77,2	M48X3	32	M24X1,5	12	16	kg 0,408	NC50HA30000
		Psi 6090	inch -	3,04		1,26		0,47	0,63	lb 0,90	
QC VGA 20S MALE	16	MPa 42	mm 66	83		32	M30X2	16	20	kg 0,752	NC49HA30001
		Psi 6090	inch 2,60	3,27		0,00		1,26	0,63	0,79 1,66	
QC VGA 20S FEMALE	16	MPa 42	mm -	79,2	M48X3	32	M30X2	16	20	kg 0,459	NC50HA30001
		Psi 6090	inch -	3,12		1,26		0,63	0,79	lb 1,01	
QC VGA 20S MALE	19	MPa 42	mm 64	107		41	M30X2	16	20	kg 0,873	NC49H040000
		Psi 6090	inch 2,52	4,21		0,00		1,61	0,63	0,79 1,92	
QC VGA 20S FEMALE	19	MPa 42	mm -	95	M54x4	46	M30X2	16	20	kg 0,583	NC50H040000
		Psi 6090	inch -	3,74		1,81		0,63	0,79	lb 1,29	
QC VGA 25S MALE	19	MPa 42	mm 64	109		41	M36X2	20	25	kg 1,007	NC49H040001
		Psi 6090	inch 2,52	4,29		0,00		1,61	0,79	0,98 2,22	
QC VGA 25S FEMALE	19	MPa 42	mm -	97	M54x4	46	M36X2	20	25	kg 0,746	NC50H040001
		Psi 6090	inch -	3,82		1,81		0,79	0,98	lb 1,64	
QC VGA 38S MALE	25	MPa 42	mm 91,2	135		55	M52X2	32	38,3	kg 1,23	NC49H050000
		Psi 6090	inch 3,59	5,31		0,00		2,17	1,26	1,51 2,71	
QC VGA 38S FEMALE	25	MPa 42	mm -	124,8	M79x4	55	M52X2	32	38,3	kg 0,967	NC50H050000
		Psi 6090	inch -	4,91		2,17		1,26	1,51	lb 2,13	