



VGN

QUICK COUPLINGS VGN ISO 5675 - ISO 7241/A

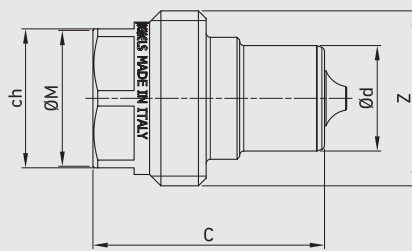
Available other different threads on request

Edition. 21.0

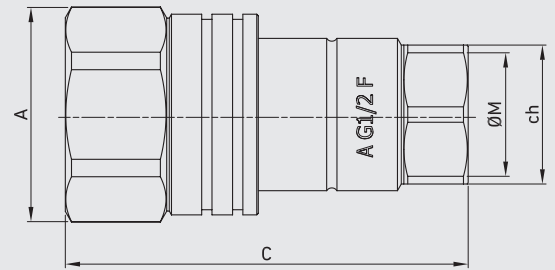
CS Carbon Steel

- Type: Quick Couplings
- Models: VGN ISO 5675 ISO 7241/A
- Sizes: DN12,5
- Pressure: up to PN350
- Treatment: Galvanized

Male



Female





CODE DESCRIPTION STRUCTURE

QC	1/2	1M/F	DN12,5	1	B
----	-----	------	--------	---	---

Type of coupling

VGN ISO 5675
dual function ring, available also coupled
with male series NV ISO 5675

Ends

ISO 1179-1 ASME B1.20.1 ISO 11926-1 (SAE
BSPP NPT J1926-1) ORB

G 1/2 N 1/2 SAE8

MALE
FEMALE

DN/ISO

12,5

Body Material

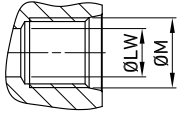
● 1 = 1,0737

Seal material

● B = NBR E = FKM*

*On request

• Other sizes on request

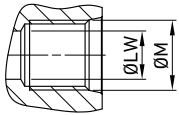


QUICK COUPLINGS VGN (male / female) FEMALE THREAD ISO 1179-1 BSPP WITH POPPET

CS
Carbon Steel

TYPE	DN	PN	$\varnothing A$	C	$\varnothing d$	ch	$\varnothing M$	Z	WEIGHT	ITEM CODE
QC VGN G 1/2 MALE	12,5	MPa 35	mm -	45	20,5	27	G1/2	M34	kg 0,0924	NC39G030000
		Psi 5075	inch -	1,77	0,81	1,06			lb 0,20	
QC VGN G 1/2 FEMALE		MPa 35	mm 42	78	-	27	G1/2	M34	kg 0,227	NC40G030000
		Psi 5075	inch 1,65	3,07	-	1,06			lb 0,50	

*dual function ring, available also coupled with male serie NV ISO 5675

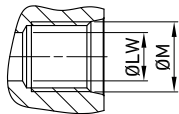


QUICK COUPLINGS VGN (male / female) FEMALE THREAD ASME B1.20.1 NPT WITH POPPET

CS
Carbon Steel

TYPE	DN	PN	$\varnothing A$	C	$\varnothing d$	ch	$\varnothing M$	Z	WEIGHT	ITEM CODE
QC VGN N 1/2 MALE	12,5	MPa 35	mm -	45	20,5	27	G1/2	M34	kg 0,0924	NC39N030000
		Psi 5075	inch -	1,77	0,81	1,06			lb 0,20	
QC VGN N 1/2 FEMALE		MPa 35	mm 42	78	-	27	G1/2	M34	kg 0,227	NC40N030000
		Psi 5075	inch 1,65	3,07	-	1,06			lb 0,50	

*dual function ring, available also coupled with male serie NV ISO 5675



QUICK COUPLINGS VGN (male / female) FEMALE THREAD ISO 11926-1 (SAE J1926-1) ORB WITH POPPET

												CS Carbon Steel	
TYPE	DN	PN		ØA	C	Ød	ch	ØM	Z	WEIGHT		ITEM CODE	
QC VGN SAE 8 MALE	12,5	MPa	35	mm	-	45	20,5	G1/2	M34	kg	0,0924	NC39S030000	
		Psi	5075	inch	-	1,77	0,81			1,06	lb		0,20
QC VGN SAE 8 FEMALE		MPa	35	mm	42	78	-	27	G1/2	M34	kg	0,227	NC40S030000
		Psi	5075	inch	1,65	3,07	-	1,06			lb	0,50	

*dual function ring, available also coupled with male serie NV ISO 5675