



MGW AP

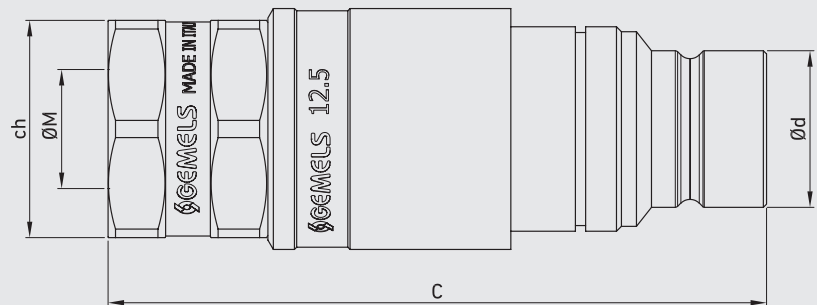
QUICK COUPLINGS FLAT FACE CONNECTION UNDER PRESSURE FOR PLATE MOUNTING

Edition. 21.1

CS Carbon Steel

- Type: Quick Couplings
- Models: MGW AP
Quick couplings flat face connection under pressure for plate mounting
- Sizes: from DN10 up to DN25
- Pressure: up to PN420
- Treatment: Galvanized

Male



CODE DESCRIPTION STRUCTURE

QC	G 1/2	M	DN12,5	1	B
-----------	--------------	----------	---------------	----------	----------

Type of coupling

MGW AP - quick couplings flat face connection under pressure for plate mounting (available only for multicouplings Gemels or plates)

Ends

ISO 1179-1	ASME	ISO 11926-1
BSPP	B1.20.1 NPT	(SAE J1926-1) ORB
G 3/8	N 3/8	SAE6
G 1/2	N 1/2	SAE8
G 1/2	N 1/2	SAE8
G 3/4	N 3/4	SAE12
G 3/4	N 3/4	SAE12
G 1	N 1	SAE16
G 1	N 1	SAE16
G 1 1/4	N 1 1/4	SAE20
G 1 1/2	N 1 1/2	/

MALE

DN/ISO

10
10
12,5
12,5
19
19
25
25
25

Body Material

● 1 = 1,0737

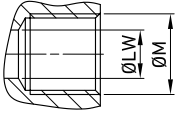
Seal material

● B = NBR E = FKM*

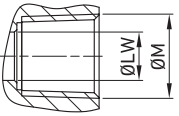


**BODY: CARBON STEEL INTERNAL
COMPONENTS: STAINLESS STEEL**

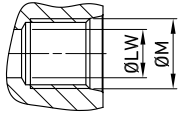
*On request
• Plugs


QUICK COUPLINGS FLAT FACE CONNECTION UNDER PRESSURE MGW AP PLATE MOUNTING (male) FEMALE THREAD ISO 1179-1 BSPP

									CS Carbon Steel
TYPE	DN	PN		C	Ød	ch	ØM	WEIGHT	ITEM CODE
QC FFAP MGW G 3/8 MALE	10	MPa 42	mm	91,5	19,75	30	G 3/8	kg 0,3	NC35G020000
		Psi 6090	inch	3,60	0,78			lb 0,66	
QC FFAP MGW G 1/2 MALE	10	MPa 42	mm	95,6	19,75	30	G 1/2	kg 0,45	NC35G020001
		Psi 6090	inch	3,76	0,78			lb 0,99	
QC FFAP MGW G 1/2 MALE	12,5	MPa 42	mm	103	24,5	34	G 1/2	kg 0,65	NC35G030000
		Psi 6090	inch	4,06	0,96			lb 1,43	
QC FFAP MGW G 3/4 MALE	12,5	MPa 42	mm	106	24,5	34	G 3/4	kg 0,7	NC35G030001
		Psi 6090	inch	4,17	0,96			lb 1,54	
QC FFAP MGW G 3/4 MALE	19	MPa 35	mm	128,5	29,95	41	G 3/4	kg 0,85	NC35G040000
		Psi 5075	inch	5,06	1,18			lb 1,87	
QC FFAP MGW G 1 MALE	19	MPa 35	mm	132	29,95	41	G 1	kg 0,9	NC35G040001
		Psi 5075	inch	5,20	1,18			lb 1,98	
QC FFAP MGW G 1 MALE	25	MPa 35	mm	143	36	50	G 1	kg 1,35	NC35G050000
		Psi 5075	inch	5,63	1,42			lb 2,98	
QC FFAP MGW G 1 1/4 MALE	25	MPa 35	mm	145,7	36	50	G1 1/4	kg 1,4	NC35G050001
		Psi 5075	inch	5,74	1,42			lb 3,09	
QC FFAP MGW G 1 1/2 MALE	25	MPa 35	mm	145,7	36	55	G1 1/2	kg 1,45	NC35G050002
		Psi 5075	inch	5,74	1,42			lb 3,20	


QUICK COUPLINGS FLAT FACE CONNECTION UNDER PRESSURE MGW AP PLATE MOUNTING (male) FEMALE THREAD ASME B1.20.1 NPT

									CS Carbon Steel
TYPE	DN	PN		C	Ød	ch	ØM	WEIGHT	ITEM CODE
QC FFAP MGW N 3/8 MALE	10	MPa 42	mm	93,5	19,75	30	N 3/8	kg 0,3	NC35N020000
		Psi 6090	inch	3,68	0,78			lb 0,66	
QC FFAP MGW N 1/2 MALE	10	MPa 42	mm	98,3	19,75	30	N 1/2	kg 0,45	NC35N020001
		Psi 6090	inch	3,87	0,78			lb 0,99	
QC FFAP MGW N 1/2 MALE	12,5	MPa 42	mm	103	24,5	34	N 1/2	kg 0,65	NC35N030000
		Psi 6090	inch	4,06	0,96			lb 1,43	
QC FFAP MGW N 3/4 MALE	12,5	MPa 42	mm	106	24,5	34	N 3/4	kg 0,7	NC35N030001
		Psi 6090	inch	4,17	0,96			lb 1,54	
QC FFAP MGW N 3/4 MALE	19	MPa 35	mm	128,5	29,95	41	N 3/4	kg 0,85	NC35N040000
		Psi 5075	inch	5,06	1,18			lb 1,87	
QC FFAP MGW N 1 MALE	19	MPa 35	mm	132	29,95	41	N 1	kg 0,9	NC35N040001
		Psi 5075	inch	5,20	1,18			lb 1,98	
QC FFAP MGW N 1 MALE	25	MPa 35	mm	143	36	50	N 1	kg 1,35	NC35N050000
		Psi 5075	inch	5,63	1,42			lb 2,98	
QC FFAP MGW N 1 1/4 MALE	25	MPa 35	mm	145,7	36	50	N1 1/4	kg 1,4	NC35N050001
		Psi 5075	inch	5,74	1,42			lb 3,09	
QC FFAP MGW N 1 1/2 MALE	25	MPa 35	mm	145,7	36	55	N1 1/2	kg 1,45	NC35N050002
		Psi 5075	inch	5,74	1,42			lb 3,20	



QUICK COUPLINGS FLAT FACE CONNECTION UNDER PRESSURE MGW AP PLATE MOUNTING (male) FEMALE THREAD ISO 11926-1 (SAE J1926-1) ORB

										CS Carbon Steel
TYPE	DN	PN		C	$\varnothing d$	ch	$\varnothing M$	WEIGHT		ITEM CODE
QC FFAP MGW SAE6 MALE	10	MPa 42	mm 92,6	19,75	30	9/16-18 UNF		kg 0,3	NC35S020000	
		Psi 6090	inch 3,65	0,78				lb 0,66		
QC FFAP MGW SAE8 MALE	10	MPa 42	mm 95,6	19,75	30	3/4-16 UNF		kg 0,45	NC35S020001	
		Psi 6090	inch 3,76	0,78				lb 0,99		
QC FFAP MGW SAE8 MALE	12,5	MPa 42	mm 103	24,5	34	3/4-16 UNF		kg 0,65	NC35S030000	
		Psi 6090	inch 4,06	0,96				lb 1,43		
QC FFAP MGW SAE12 MALE	12,5	MPa 42	mm 108,5	24,5	34	1-1/16-12 UN		kg 0,7	NC35S030001	
		Psi 6090	inch 4,27	0,96				lb 1,54		
QC FFAP MGW SAE12 MALE	19	MPa 35	mm 130	29,95	41	1-1/16-12 UN		kg 0,85	NC35S040000	
		Psi 5075	inch 5,12	1,18				lb 1,87		
QC FFAP MGW SAE16 MALE	19	MPa 35	mm 132	29,95	41	1 5/16-12 UN		kg 0,9	NC35S040001	
		Psi 5075	inch 5,20	1,18				lb 1,98		
QC FFAP MGW SAE16 MALE	25	MPa 35	mm 143	36	50	1 5/16-12 UN		kg 1,35	NC35S050000	
		Psi 5075	inch 5,63	1,42				lb 2,98		
QC FFAP MGW SAE20 MALE	25	MPa 35	mm 145,7	36	50	1 5/8-12 UN		kg 1,4	NC35S050001	
		Psi 5075	inch 5,74	1,42				lb 3,09		