



PUSH-PULL N

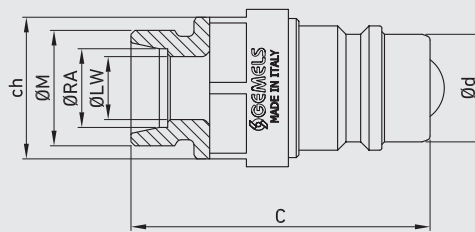
ISO 7241/A PUSH-PULL BALL
ISO 5675 N

Edition. 21.0

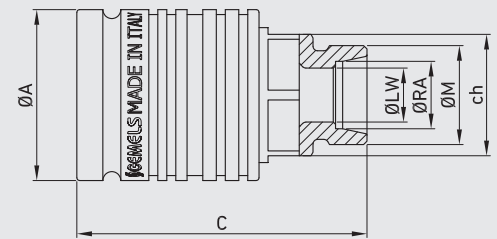
CS Carbon Steel

- Type: Quick Couplings
- Models: ISO 7241/A
PUSH-PULL BALL ISO 5675 N
- Sizes: from DN13
- Pressure: up to PN350
- Treatment: Galvanized

Male



Female



Available also
in patented version:
ball valve with integrated
quick coupling.



CODE DESCRIPTION STRUCTURE

QC	1/2	F/M	DN12,5	1	B
----	-----	-----	--------	---	---

Type of coupling

ISO 7241 A PP N

Ends

ISO 1179-1	ASME B1.20.1	ISO 11926-1	ISO 8434-1-S	ISO 8434-1-L	ISO 8434-1-S	ISO 8434-1-L
BSPP	NPT	(SAE J1926-1) ORB	(DIN 2353)	(DIN 2353)	(DIN 2353)	(DIN 2353)
G3/8	N 1/2	SAE8	12S	10L	10S	10L
G1/2			14S	12L	12S	12L
			16S	15L	16S	15L
				18L		18L

MALE

FEMALE

DN/ISO

12,5

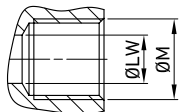
Body Material

● 1 = 1,0737

Seal material

B = NBR E = FKM*

*On request
• Plugs

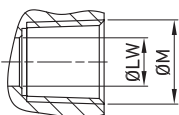


Male type see ISO 5675

QUICK COUPLINGS PUSH-PULL BALL (male / female) FEMALE THREAD ISO 1179-1 BSPP Interchangeable according to ISO 7241-A

CS
Carbon
Steel

TYPE	DN	PN	ØA	C	Ød	ch	ØM	WEIGHT	ITEM CODE
QC PP N G 3/8 FEMALE	12,5	MPa 35	mm 38	66	-	27	G3/8	kg 0,29	NC32G030000
		Psi 5075	inch 1,50	2,60	-	1,06		lb 0,64	
QC PP N G 1/2 FEMALE	12,5	MPa 35	mm 38	68,5	-	27	G1/2	kg 0,31	NC32G030001
		Psi 5075	inch 1,50	2,70	-	1,06		lb 0,68	

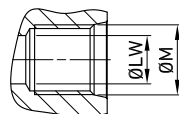


Male type see ISO 5675

QUICK COUPLINGS PUSH-PULL BALL (male / female) FEMALE THREAD ASME B1.20.1 NPT Interchangeable according to ISO 7241-A

CS
Carbon
Steel

TYPE	DN	PN	ØA	C	Ød	ch	ØM	WEIGHT	ITEM CODE
QC PP N N 1/2 FEMALE	12,5	MPa 35	mm 38	72	-	27	N1/2	kg 0,19	NC32N030000
		Psi 5075	inch 1,50	2,83	-	1,06		lb 0,42	

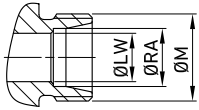


Male type see ISO 5675

QUICK COUPLINGS PUSH-PULL BALL (male / female) FEMALE THREAD ISO 11926-1 (SAE J1926-1) ORB Interchangeable according to ISO 7241-A

CS
Carbon
Steel

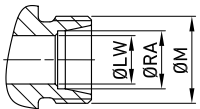
TYPE	DN	PN	ØA	C	Ød	ch	ØM	WEIGHT	ITEM CODE
QC PP N SAE8 FEMALE	12,5	MPa 35	mm 38	72	-	27	3/4-16 UNF	kg 0,19	NC32S030000
		Psi 5075	inch 1,50	2,83	-	1,06		lb 0,42	



QUICK COUPLINGS PUSH-PULL BALL (male / female)
MALE THREAD METRIC ISO 8434-1-S (DIN 2353)
 Interchangeable according to ISO 7241-A

CS
Carbon
Steel

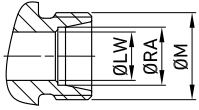
TYPE	DN	PN	ØA	C	Ød	ch	ØM	ØLW	ØRA	WEIGHT	ITEM CODE
QC PP N 12S MALE	12,5	MPa 35	mm -	56	20,5	27	M20X1,5	8	12	kg 0,135	NC31H030000
		Psi 5075	inch -	2,20	0,81	1,06		0,31	0,47	lb 0,30	
QC PP N 12S FEMALE		MPa 35	mm 38	64,5	-	27	M20X1,5	8	12	kg 0,28	NC32H030000
		Psi 5075	inch 1,50	2,54	-	1,06		0,31	0,47	lb 0,62	
QC PP N 14S MALE		MPa 35	mm -	59	20,5	27	M22X1,5	8	14	kg 0,45	NC31H030001
		Psi 5075	inch -	2,32	0,81	1,06		0,31	0,55	lb 0,99	
QC PP N 14S FEMALE		MPa 35	mm 38	66,5	-	27	M22X1,5	8	14	kg 0,281	NC32H030001
		Psi 5075	inch 1,50	2,62	-	1,06		0,31	0,55	lb 0,62	
QC PP N 16S MALE		MPa 35	mm -	59	20,5	27	M24X1,5	12	16	kg 0,157	NC31H030002
		Psi 5075	inch -	2,32	0,81	1,06		0,47	0,63	lb 0,35	
QC PP N 16S FEMALE		MPa 35	mm 38	66,5	-	27	M24X1,5	12	16	kg 0,284	NC32H030002
		Psi 5075	inch 1,50	2,62	-	1,06		0,47	0,63	lb 0,63	



QUICK COUPLINGS PUSH-PULL BALL (male / female)
MALE THREAD METRIC ISO 8434-1-L (DIN 2353)
 Interchangeable according to ISO 7241-A

CS
Carbon
Steel

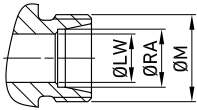
TYPE	DN	PN	ØA	C	Ød	ch	ØM	ØLW	ØRA	WEIGHT	ITEM CODE
QC PP N 10L MALE	12,5	MPa 35	mm -	56	20,5	27	M16X1,5	8	10	kg 0,16	NC31L030000
		Psi 5075	inch -	2,20	0,81	1,06		0,31	0,39	lb 0,35	
QC PP N 10L FEMALE		MPa 35	mm 38	63,5	-	27	M16X1,5	8	10	kg 0,24	NC32L030000
		Psi 5075	inch 1,50	2,50	-	1,06		0,31	0,39	lb 0,53	
QC PP N 12L MALE		MPa 35	mm -	56	20,5	27	M18X1,5	10	12	kg 0,169	NC31L030001
		Psi 5075	inch -	2,20	0,81	1,06		0,39	0,47	lb 0,37	
QC PP N 12L FEMALE		MPa 35	mm 38	63,5	-	27	M18X1,5	10	12	kg 0,254	NC32L030001
		Psi 5075	inch 1,50	2,50	-	1,06		0,39	0,47	lb 0,56	
QC PP N 15L MALE		MPa 35	mm -	57	2	27	M22X1,5	12	15	kg 0,17	NC31L030002
		Psi 5075	inch -	2,24	0,08	1,06		0,47	0,59	lb 0,37	
QC PP N 15L FEMALE		MPa 35	mm 38	64,5	-	27	M22X1,5	12	15	kg 0,26	NC32L030002
		Psi 5075	inch 1,50	2,54	-	1,06		0,47	0,59	lb 0,57	
QC PP N 18L MALE		MPa 35	mm -	57	20,5	27	M26X1,5	15	18	kg 0,179	NC31L030003
		Psi 5075	inch -	2,24	0,81	1,06		0,59	0,71	lb 0,39	
QC PP N 18L FEMALE		MPa 35	mm 38	64,5	-	27	M26X1,5	15	18	kg 0,263	NC32L030003
		Psi 5075	inch 1,50	2,54	-	1,06		0,59	0,71	lb 0,58	



QUICK COUPLINGS PUSH-PULL BALL (male / female) MALE THREAD METRIC ISO 8434-1-S (DIN 2353) BULKHEAD Interchangeable according to ISO 7241-A

CS
Carbon
Steel

TYPE	DN	PN	ØA	C	Ød	ch	ØM	ØLW	ØRA	WEIGHT	ITEM CODE
QC PP N 10S BK MALE	12,5	MPa 35	mm -	72	20,5	27	M18X1,5	7	10	kg 0,169	NC311030000
		Psi 5075	inch -	2,83	0,81	1,06		0,28	0,39	lb 0,37	
QC PP N 10S BK FEMALE		MPa 35	mm 38	79,5	-	27	M18X1,5	7	10	kg 0,3	NC321030000
		Psi 5075	inch 1,50	3,13	-	1,06		0,28	0,39	lb 0,66	
QC PP N 12S BK MALE		MPa 35	mm -	72	20,5	27	M20X1,5	8	12	kg 0,16	NC311030001
		Psi 5075	inch -	2,83	0,81	1,06		0,31	0,47	lb 0,35	
QC PP N 12S BK FEMALE		MPa 35	mm 38	79,5	-	27	M20X1,5	8	12	kg 0,32	NC321030001
		Psi 5075	inch 1,50	3,13	-	1,06		0,31	0,47	lb 0,71	
QC PP N 16S BK MALE		MPa 35	mm -	74	20,5	27	M24X1,5	12	16	kg 0,172	NC311030002
		Psi 5075	inch -	2,91	0,81	1,06		0,47	0,63	lb 0,38	
QC PP N 16S BK FEMALE		MPa 25	mm 38	81,5	-	27	M24X1,5	12	16	kg 0,33	NC321030002
		Psi 3625	inch 1,50	3,21	-	1,06		0,47	0,63	lb 0,73	



QUICK COUPLINGS PUSH-PULL BALL (male / female)
MALE THREAD METRIC ISO 8434-1-L (DIN 2353) BULKHEAD
 Interchangeable according to ISO 7241-A

CS
Carbon
Steel

TYPE	DN	PN	ØA	C	Ød	ch	ØM	ØLW	ØRA	WEIGHT	ITEM CODE
QC PP N 10L BK MALE	12,5	MPa 35	mm 71	20,5	27	M16X1,5	8	10	kg 0,149	0,33	NC31M030000
		Psi 5075	inch 0,00	2,80	0,81						
QC PP N 10L BK FEMALE		MPa 35	mm 38	78,5	27	M16X1,5	8	10	kg 0,3	0,66	NC32M030000
		Psi 5075	inch 1,50	3,09	0,00						
QC PP N 12L BK MALE		MPa 35	mm 72	20,5	27	M18X1,5	10	12	kg 0,15	0,33	NC31M030001
		Psi 5075	inch 0,00	2,83	0,81						
QC PP N 12L BK FEMALE		MPa 35	mm 38	79,5	27	M18X1,5	10	12	kg 0,3	0,66	NC32M030001
		Psi 5075	inch 1,50	3,13	0,00						
QC PP N 15L BK MALE		MPa 35	mm 72	20,5	27	M22X1,5	12	15	kg 0,16	0,35	NC31M030002
		Psi 5075	inch 0,00	2,83	0,81						
QC PP N 15L BK FEMALE		MPa 35	mm 38	79,5	27	M22X1,5	12	15	kg 0,31	0,68	NC32M030002
		Psi 5075	inch 1,50	3,13	0,00						
QC PP N 18L BK MALE	MPa 35	mm 72	20,5	27	M26X1,5	15	18	kg 0,175	0,39	NC31M030003	
	Psi 5075	inch 0,00	2,83	0,81							1,06
QC PP N 18L BK FEMALE	MPa 35	mm 38	79,5	27	M26X1,5	15	18	kg 0,33	0,73	NC32M030003	
	Psi 5075	inch 1,50	3,13	0,00							1,06