



MGW

QUICK COUPLINGS FLAT FACE FOR PLATE MOUNTING

Edition. 21.2

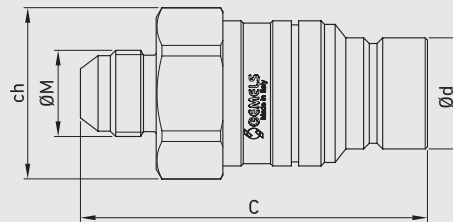
CS Carbon Steel

- Type: Quick Couplings
- Models: MGW - Quick couplings flat face for plate mounting
- Sizes: from DN13
- Pressure: up to PN420
- Treatment: Galvanized

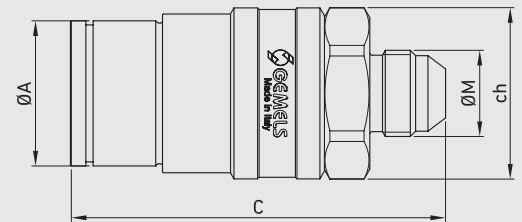
SS Stainless Steel

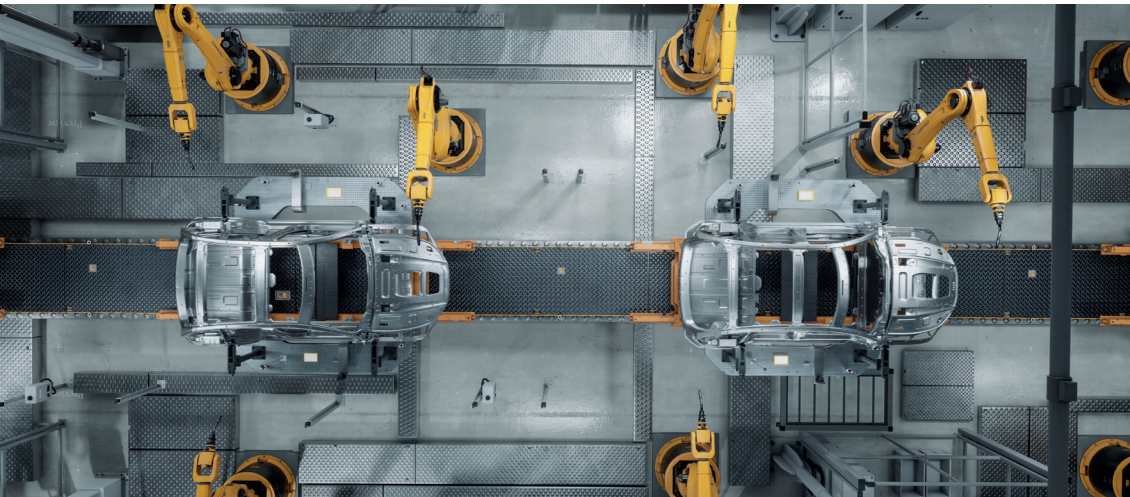
- Type: Quick Couplings
- Models: MGW - Quick couplings flat face for plate mounting
- Sizes: from DN13
- Pressure: up to PN420

Male



Female





**BODY: CARBON STEEL INTERNAL
COMPONENTS: STAINLESS STEEL**

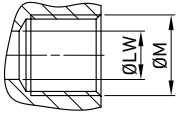
CODE DESCRIPTION STRUCTURE

QC		1/2						M/F	DN12,5	1	B																							
<p>Type of coupling</p> <p>MGW - Quick couplings flat face for plate mounting (available only for multicouplings Gemels or plates)</p>																																		
<p>Ends</p> <table border="1"> <thead> <tr> <th>ISO 1179-1</th> <th>ISO 8434-6</th> <th>ASME B1.20.1</th> <th>ISO 11926-1</th> <th>ISO 8434-1-L</th> <th>ISO 8434-1-S</th> <th>ISO 8434-1-L</th> <th>8434-2</th> </tr> </thead> <tbody> <tr> <td>BSPP</td> <td>BSPP</td> <td>NPT</td> <td>(SAE J1926-1) ORB</td> <td>(DIN 2353)</td> <td>(DIN 2353) BULKHEAD</td> <td>(DIN 2353) BULKHEAD</td> <td>(SAE J514) JIC</td> </tr> <tr> <td>G 1/2</td> <td>G 1/2</td> <td>N 1/2</td> <td>SAE12</td> <td>12L</td> <td>16S</td> <td>12L</td> <td>J 1/2</td> </tr> </tbody> </table> <p>MALE FEMALE</p>											ISO 1179-1	ISO 8434-6	ASME B1.20.1	ISO 11926-1	ISO 8434-1-L	ISO 8434-1-S	ISO 8434-1-L	8434-2	BSPP	BSPP	NPT	(SAE J1926-1) ORB	(DIN 2353)	(DIN 2353) BULKHEAD	(DIN 2353) BULKHEAD	(SAE J514) JIC	G 1/2	G 1/2	N 1/2	SAE12	12L	16S	12L	J 1/2
ISO 1179-1	ISO 8434-6	ASME B1.20.1	ISO 11926-1	ISO 8434-1-L	ISO 8434-1-S	ISO 8434-1-L	8434-2																											
BSPP	BSPP	NPT	(SAE J1926-1) ORB	(DIN 2353)	(DIN 2353) BULKHEAD	(DIN 2353) BULKHEAD	(SAE J514) JIC																											
G 1/2	G 1/2	N 1/2	SAE12	12L	16S	12L	J 1/2																											
<p>Size</p> <p>DN/ISO 12,5</p>																																		
<p>Body Material</p> <p>● 4 = 1,4404</p>																																		
<p>Seal material</p> <p>E = FKM*</p>																																		

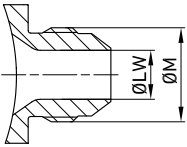
***On request**

- Different size and threads available on request.
- Available with zinc-nickel or AISI 316 treatment.
- Couplings are put together with a seeger ring for a faster mounting or service on the multiconnection.

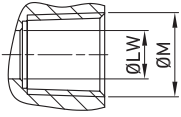
For further special requests please consult our technical/commercial service.


**QUICK COUPLINGS FLAT FACE MGW PLATE MOUNTING (male / female)
FEMALE THREAD ISO 1179-1 BSPP**

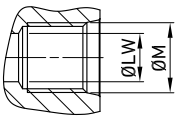
										CS Carbon Steel											SS Stainless Steel
TYPE	DN	PN	ØA	C	Ød	ch	ØM	WEIGHT	ITEM CODE	TYPE	DN	PN	ØA	C	Ød	ch	ØM	WEIGHT	ITEM CODE		
QC FF MGW G 1/2 MALE	12,5	MPa 42	mm - 73,8	24,5	34	G1/2		kg 0,4	NC27G030000	QC FF MGW G 1/2 MALE	12,5	MPa 42	mm - 73,8	24,5	34	G1/2		kg 0,4	NC27G03S000		
		Psi 6090	inch - 2,91	0,96	1,34			lb 0,88				Psi 6090	inch - 2,91	0,96	1,34			lb 0,88			
QC FF MGW G 1/2 FEMALE	12,5	MPa 42	mm 32	81	- 34	G1/2		kg 0,6	NC28G030000	QC FF MGW G 1/2 FEMALE	12,5	MPa 42	mm 32	81	- 34	G1/2		kg 0,6	NC28G03S000		
		Psi 6090	inch 1,26	3,19	- 1,34			lb 1,32				Psi 6090	inch 1,26	3,19	- 1,34			lb 1,32			
QC FF MGW G 3/4 MALE	12,5	MPa 42	mm - 78,8	24,5	34	G3/4		kg 0,424	NC27G030001	QC FF MGW G 3/4 MALE	12,5	MPa 42	mm - 78,8	24,5	34	G3/4		kg 0,424	NC27G03S001		
		Psi 6090	inch - 3,10	0,96	1,34			lb 0,93				Psi 6090	inch - 3,10	0,96	1,34			lb 0,93			
QC FF MGW G 3/4 FEMALE	12,5	MPa 42	mm 32	84	- 34	G3/4		kg 0,61	NC28G030001	QC FF MGW G 3/4 FEMALE	12,5	MPa 42	mm 32	84	- 34	G3/4		kg 0,61	NC28G03S001		
		Psi 6090	inch 1,26	3,31	- 1,34			lb 1,34				Psi 6090	inch 1,26	3,31	- 1,34			lb 1,34			


**QUICK COUPLINGS FLAT FACE MGW PLATE MOUNTING (male / female)
MALE THREAD ISO 8434-6 BSPP**

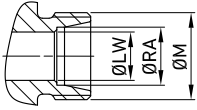
										CS Carbon Steel											SS Stainless Steel
TYPE	DN	PN	ØA	C	Ød	ch	ØM	ØLW	WEIGHT	ITEM CODE	TYPE	DN	PN	ØA	C	Ød	ch	ØM	ØLW	WEIGHT	ITEM CODE
QC FF MGW G 1/2M MALE	12,5	MPa 42	mm - 76,5	24,5	34	G1/2		11,1	kg 0,277	NC27E030000	QC FF MGW G 1/2M MALE	12,5	MPa 42	mm - 76,5	24,5	34	G1/2		11,1	kg 0,277	NC27E03S000
		Psi 6090	inch - 3,01	0,96	1,34			0,44	lb 0,61				Psi 6090	inch - 3,01	0,96	1,34			0,44	lb 0,61	
QC FF MGW G 1/2M FEMALE	12,5	MPa 42	mm 32	83	- 34	G1/2		11,1	kg 0,705	NC28E030000	QC FF MGW G 1/2M FEMALE	12,5	MPa 42	mm 32	83	- 34	G1/2		11,1	kg 0,705	NC28E03S000
		Psi 6090	inch 1,26	3,27	- 1,34			0,44	lb 1,55				Psi 6090	inch 1,26	3,27	- 1,34			0,44	lb 1,55	
QC FF MGW G 3/4M MALE	12,5	MPa 42	mm - 78,5	24,5	34	G3/4		16,7	kg 0,4	NC27E030001	QC FF MGW G 3/4M MALE	12,5	MPa 42	mm - 78,5	24,5	34	G3/4		16,7	kg 0,4	NC27E03S001
		Psi 6090	inch - 3,09	0,96	1,34			0,66	lb 0,88				Psi 6090	inch - 3,09	0,96	1,34			0,66	lb 0,88	
QC FF MGW G 3/4M FEMALE	12,5	MPa 42	mm 32	85	- 34	G3/4		16,7	kg 0,8	NC28E030001	QC FF MGW G 3/4M FEMALE	12,5	MPa 42	mm 32	85	- 34	G3/4		16,7	kg 0,8	NC28E03S001
		Psi 6090	inch 1,26	3,35	- 1,34			0,66	lb 1,76				Psi 6090	inch 1,26	3,35	- 1,34			0,66	lb 1,76	


**QUICK COUPLINGS FLAT FACE MGW PLATE MOUNTING (male / female)
FEMALE THREAD ASME B1.20.1 NPT**

										CS Carbon Steel											SS Stainless Steel
TYPE	DN	PN	ØA	C	Ød	ch	ØM	WEIGHT	ITEM CODE	TYPE	DN	PN	ØA	C	Ød	ch	ØM	WEIGHT	ITEM CODE		
QC FF MGW N 1/2 MALE	12,5	MPa 42	mm -	77,3	24,5	34	N1/2	kg 0,45	NC27N030000	QC FF MGW N 1/2 MALE	12,5	MPa 42	mm -	77,3	24,5	34	N1/2	kg 0,45	NC27N03S000		
		Psi 6090	inch -	3,04	0,96	1,34		lb 0,99				Psi 6090	inch -	3,04	0,96	1,34		lb 0,99			
QC FF MGW N 1/2 FEMALE	12,5	MPa 42	mm 32	81	-	34	N1/2	kg 0,751	NC28N030000	QC FF MGW N 1/2 FEMALE	12,5	MPa 42	mm 32	81	-	34	N1/2	kg 0,751	NC28N03S000		
		Psi 6090	inch 1,26	3,19	-	1,34		lb 1,66				Psi 6090	inch 1,26	3,19	-	1,34		lb 1,66			
QC FF MGW N 3/4 MALE	12,5	MPa 42	mm -	77,3	24,5	34	N3/4	kg 0,422	NC27N030001	QC FF MGW N 3/4 MALE	12,5	MPa 42	mm -	77,3	24,5	34	N3/4	kg -	NC27N03S001		
		Psi 6090	inch -	3,04	0,96	1,34		lb 0,93				Psi 6090	inch -	3,04	0,96	1,34		lb -			
QC FF MGW N 3/4 FEMALE	12,5	MPa 42	mm 32	84	-	34	N3/4	kg 0,737	NC28N030001	QC FF MGW N 3/4 FEMALE	12,5	MPa 42	mm 32	84	-	34	N3/4	kg -	NC28N03S001		
		Psi 6090	inch 1,26	3,31	-	1,34		lb 1,62				Psi 6090	inch 1,26	3,31	-	1,34		lb -			


**QUICK COUPLINGS FLAT FACE MGW PLATE MOUNTING (male / female)
FEMALE THREAD ISO 11926-1 (SAE J1926-1) ORB**

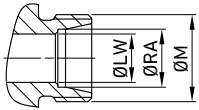
										CS Carbon Steel											SS Stainless Steel
TYPE	DN	PN	ØA	C	Ød	ch	ØM	WEIGHT	ITEM CODE	TYPE	DN	PN	ØA	C	Ød	ch	ØM	WEIGHT	ITEM CODE		
QC FF MGW SAE8 MALE	12,5	MPa 42	mm -	73,8	24,5	34	3/4-16	kg 0,43	NC27S030000	QC FF MGW SAE8 MALE	12,5	MPa 42	mm -	73,8	24,5	34	3/4-16	kg 0,43	NC27S03S000		
		Psi 6090	inch -	2,91	0,96	1,34	UNF	lb 0,95				Psi 6090	inch -	2,91	0,96	1,34	UNF	lb 0,95			
QC FF MGW SAE8 FEMALE	12,5	MPa 42	mm 32	81	-	34	3/4-16	kg 0,75	NC28S030000	QC FF MGW SAE8 FEMALE	12,5	MPa 42	mm 32	81	-	34	3/4-16	kg 0,75	NC28S03S000		
		Psi 6090	inch 1,26	3,19	-	1,34	UNF	lb 1,65				Psi 6090	inch 1,26	3,19	-	1,34	UNF	lb 1,65			
QC FF MGW SAE12 MALE	12,5	MPa 42	mm -	81,3	24,5	34	1-1/16-	kg 0,43	NC27S030001	QC FF MGW SAE12 MALE	12,5	MPa 42	mm -	81,3	24,5	34	1-1/16-	kg -	NC27S03S001		
		Psi 6090	inch -	3,20	0,96	1,34	12 UN	lb 0,95				Psi 6090	inch -	3,20	0,96	1,34	12 UN	lb -			
QC FF MGW SAE12 FEMALE	12,5	MPa 42	mm 32	86,5	-	34	1-1/16-	kg 0,73	NC28S030001	QC FF MGW SAE12 FEMALE	12,5	MPa 42	mm 32	86,5	-	34	1-1/16-	kg -	NC28S03S001		
		Psi 6090	inch 1,26	3,41	-	1,34	12 UN	lb 1,61				Psi 6090	inch 1,26	3,41	-	1,34	12 UN	lb -			



QUICK COUPLINGS FLAT FACE MGW PLATE MOUNTING (MALE / FEMALE) MALE THREAD METRIC ISO 8434-1-L (DIN 2353)

												CS Carbon Steel
TYPE	DN	PN	ØA	C	Ød	ch	ØM	ØLW	ØRA	WEIGHT	ITEM CODE	
QC FF MGW 12L MALE	12,5	MPa 42	mm -	75,5	24,5	34	M18X1,5	10	12	kg 0,35	NC27L030000	
		Psi 6090	inch -	2,97	0,96	1,34		0,39	0,47	lb 0,77		
QC FF MGW 12L FEMALE		MPa 42	mm 32	80	-	34	M18X1,5	10	12	kg 0,579	NC28L030000	
		Psi 6090	inch 1,26	3,15	-	1,34		0,39	0,47	lb 1,28		
QC FF MGW 15L MALE		MPa 42	mm -	76,5	24,5	34	M22X1,5	12	15	kg 0,4	NC27L030001	
		Psi 6090	inch -	3,01	0,96	1,34		0,47	0,59	lb 0,88		
QC FF MGW 15L FEMALE		MPa 42	mm -	81	-	34	M22X1,5	12	15	kg 0,585	NC28L030001	
		Psi 6090	inch -	3,19	-	1,34		0,47	0,59	lb 1,29		
QC FF MGW 18L MALE		MPa 42	mm -	76,5	24,5	34	M26X1,5	15	18	kg 0,43	NC27L030002	
		Psi 6090	inch -	3,01	0,96	1,34		0,59	0,71	lb 0,95		
QC FF MGW 18L FEMALE		MPa 42	mm 32	81	-	34	M26X1,5	15	18	kg 0,591	NC28L030002	
		Psi 6090	inch 1,26	3,19	-	1,34		0,59	0,71	lb 1,30		

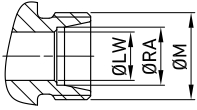
												SS Stainless Steel
TYPE	DN	PN	ØA	C	Ød	ch	ØM	ØLW	ØRA	WEIGHT	ITEM CODE	
QC FF MGW 12L MALE	12,5	MPa 42	mm -	75,5	24,5	34	M18X1,5	10	12	kg 0,35	NC27L03S000	
		Psi 6090	inch -	2,97	0,96	1,34		0,39	0,47	lb 0,77		
QC FF MGW 12L FEMALE		MPa 42	mm 32	80	-	34	M18X1,5	10	12	kg 0,579	NC28L03S000	
		Psi 6090	inch 1,26	3,15	-	1,34		0,39	0,47	lb 1,28		
QC FF MGW 15L MALE		MPa 42	mm -		24,5	34	M22X1,5	12	15	kg 0,4	NC27L03S001	
		Psi 6090	inch -	0,00	0,96	1,34		0,47	0,59	lb 0,88		
QC FF MGW 15L FEMALE		MPa 42	mm -		-	34	M22X1,5	12	15	kg 0,585	NC28L03S001	
		Psi 6090	inch -	0,00	-	1,34		0,47	0,59	lb 1,29		
QC FF MGW 18L MALE		MPa 42	mm -	76,5	24,5	34	M26X1,5	15	18	kg 0,43	NC27L03S002	
		Psi 6090	inch -	3,01	0,96	1,34		0,59	0,71	lb 0,95		
QC FF MGW 18L FEMALE		MPa 42	mm 32	81	-	34	M26X1,5	15	18	kg 0,591	NC28L03S002	
		Psi 6090	inch 1,26	3,19	-	1,34		0,59	0,71	lb 1,30		



QUICK COUPLINGS FLAT FACE MGW PLATE MOUNTING (male / female) MALE THREAD METRIC ISO 8434-1-S (DIN 2353) BULKHEAD

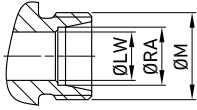
												CS Carbon Steel
TYPE	DN	PN	ØA	C	Ød	ch	ØM	ØLW	ØRA	WEIGHT	ITEM CODE	
QC FF MGW 16S BK MALE	12,5	MPa 42	mm -	91,3	24,5	34	M24X1,5	12	16	kg 0,322	NC271030000	
		Psi 6090	inch -	3,59	0,96	1,34		0,47	0,63	lb 0,71		
QC FF MGW 16S BK FEMALE		MPa 42	mm 32	98	-	34	M24X1,5	12	16	kg 0,755	NC281030000	
		Psi 6090	inch 1,26	3,86	-	1,34		0,47	0,63	lb 1,66		

												SS Stainless Steel
TYPE	DN	PN	ØA	C	Ød	ch	ØM	ØLW	ØRA	WEIGHT	ITEM CODE	
QC FF MGW 16S BK MALE	12,5	MPa 42	mm -	91,3	24,5	34	M24X1,5	12	16	kg 0,322	NC27103S000	
		Psi 6090	inch -	3,59	0,96	1,34		0,47	0,63	lb 0,71		
QC FF MGW 16S BK FEMALE		MPa 42	mm 32	98	-	34	M24X1,5	12	16	kg 0,755	NC28103S000	
		Psi 6090	inch 1,26	3,86	-	1,34		0,47	0,63	lb 1,66		


**QUICK COUPLINGS FLAT FACE MGW PLATE MOUNTING (male / female)
 MALE THREAD METRIC ISO 8434-1-L (DIN 2353) BULKHEAD**

												CS Carbon Steel
TYPE	DN	PN	ØA	C	Ød	ch	ØM	ØLW	ØRA	WEIGHT	ITEM CODE	
QC FF MGW 12L BK MALE	12,5	MPa 42	mm -	91,3	24,5	34	M18X1,5	10	12	kg 0,301	NC27M030000	
		Psi 6090	inch -	3,59	0,96	1,34		0,39	0,47	lb 0,66		
QC FF MGW 12L BK FEMALE		MPa 42	mm 32	96	-	34	M18X1,5	10	12	kg 0,722	NC28M030000	
		Psi 6090	inch 1,26	3,78	-	1,34		0,39	0,47	lb 1,59		
QC FF MGW 15L BK MALE		MPa 42	mm -	91,3	24,5	34	M22X1,5	12	15	kg 0,318	NC27M030001	
		Psi 6090	inch -	3,59	0,96	1,34		0,47	0,59	lb 0,70		
QC FF MGW 15L BK FEMALE		MPa 42	mm 32	96	-	34	M22X1,5	12	15	kg 0,737	NC28M030001	
		Psi 6090	inch 1,26	3,78	-	1,34		0,47	0,59	lb 1,62		

												SS Stainless Steel
TYPE	DN	PN	ØA	C	Ød	ch	ØM	ØLW	ØRA	WEIGHT	ITEM CODE	
QC FF MGW 12L BK MALE	12,5	MPa 42	mm -	91,3	24,5	34	M18X1,5	10	12	kg 0,301	NC27M03S000	
		Psi 6090	inch -	3,59	0,96	1,34		0,39	0,47	lb 0,66		
QC FF MGW 12L BK FEMALE		MPa 42	mm 32	96	-	34	M18X1,5	10	12	kg 0,722	NC28M03S000	
		Psi 6090	inch 1,26	3,78	-	1,34		0,39	0,47	lb 1,59		
QC FF MGW 15L BK MALE		MPa 42	mm -	91,3	24,5	34	M22X1,5	12	15	kg 0,318	NC27M03S001	
		Psi 6090	inch -	3,59	0,96	1,34		0,47	0,59	lb 0,70		
QC FF MGW 15L BK FEMALE		MPa 42	mm 32	96	-	34	M22X1,5	12	15	kg 0,737	NC28M03S001	
		Psi 6090	inch 1,26	3,78	-	1,34		0,47	0,59	lb 1,62		



QUICK COUPLINGS FLAT FACE MGW PLATE MOUNTING (MALE / FEMALE) MALE THREAD ISO 8434-2 (SAE J514) JIC

											CS Carbon Steel
TYPE	DN	PN	ØA	C	Ød	ch	ØM	ØLW	WEIGHT	ITEM CODE	
QC FF MGW 1/2 JIC MALE	12,5	MPa 42	mm -	76,5	24,5	34	3/4-16	9,9	kg 0,258	NC27J030000	
		Psi 6090	inch -	3,01	0,96	1,34	UNF	0,39	lb 0,57		
QC FF MGW 1/2 JIC FEMALE		MPa 42	mm 32	82,7	-	34	3/4-16	9,9	kg 0,574	NC28J030000	
		Psi 6090	inch 1,26	3,26	-	1,34	UNF	0,39	lb 1,27		
QC FF MGW 5/8 JIC MALE		MPa 42	mm -	79	24,5	34	7/8-14	12,3	kg 0,269	NC27J030001	
		Psi 6090	inch -	3,11	0,96	1,34	UNF	0,48	lb 0,59		
QC FF MGW 5/8 JIC FEMALE		MPa 42	mm 32	85,3	-	34	7/8-14	12,3	kg 0,582	NC28J030001	
		Psi 6090	inch 1,26	3,36	-	1,34	UNF	0,48	lb 1,28		
QC FF MGW 3/4 JIC MALE		MPa 42	mm -	81,7	24,5	34	1-1/16-12	15,5	kg 0,279	NC27J030002	
		Psi 6090	inch -	3,22	0,96	1,34	UN	0,61	lb 0,62		
QC FF MGW 3/4 JIC FEMALE		MPa 42	mm 32	88	-	34	1-1/16-12	15,5	kg 0,595	NC28J030002	
		Psi 6090	inch 1,26	3,46	-	1,34	UN	0,61	lb 1,31		
QC FF MGW 1 JIC MALE	MPa 42	mm -	83	24,5	34	1-5/16-12	21,5	kg 0,289	NC27J030003		
	Psi 6090	inch -	3,27	0,96	1,34	UN	0,85	lb 0,64			
QC FF MGW 1 JIC FEMALE	MPa 42	mm 32	89	-	34	1-5/16-12	21,5	kg 0,616	NC28J030003		
	Psi 6090	inch 1,26	3,50	-	1,34	UN	0,85	lb 1,36			

											SS Stainless Steel
TYPE	DN	PN	ØA	C	Ød	ch	ØM	ØLW	WEIGHT	ITEM CODE	
QC FF MGW 1/2 JIC MALE	12,5	MPa 42	mm -	76,5	24,5	34	3/4-16	9,9	kg 0,258	NC27J03S000	
		Psi 6090	inch -	3,01	0,96	1,34	UNF	0,39	lb 0,57		
QC FF MGW 1/2 JIC FEMALE		MPa 42	mm 32	82,7	-	34	3/4-16	9,9	kg 0,574	NC28J03S000	
		Psi 6090	inch 1,26	3,26	-	1,34	UNF	0,39	lb 1,27		
QC FF MGW 5/8 JIC MALE		MPa 42	mm -	79	24,5	34	7/8-14	12,3	kg 0,269	NC27J03S001	
		Psi 6090	inch -	3,11	0,96	1,34	UNF	0,48	lb 0,59		
QC FF MGW 5/8 JIC FEMALE		MPa 42	mm 32	85,3	-	34	7/8-14	12,3	kg 0,582	NC28J03S001	
		Psi 6090	inch 1,26	3,36	-	1,34	UNF	0,48	lb 1,28		
QC FF MGW 3/4 JIC MALE		MPa 42	mm -	81,7	24,5	34	1-1/16-12	15,5	kg 0,279	NC27J03S002	
		Psi 6090	inch -	3,22	0,96	1,34	UN	0,61	lb 0,62		
QC FF MGW 3/4 JIC FEMALE		MPa 42	mm 32	88	-	34	1-1/16-12	15,5	kg 0,595	NC28J03S002	
		Psi 6090	inch 1,26	3,46	-	1,34	UN	0,61	lb 1,31		
QC FF MGW 1 JIC MALE	MPa 42	mm -	83	24,5	34	1-5/16-12	21,5	kg 0,289	NC27J03S003		
	Psi 6090	inch -	3,27	0,96	1,34	UN	0,85	lb 0,64			
QC FF MGW 1 JIC FEMALE	MPa 42	mm 32	89	-	34	1-5/16-12	21,5	kg 0,616	NC28J03S003		
	Psi 6090	inch 1,26	3,50	-	1,34	UN	0,85	lb 1,36			