



# VBP

Edition. 21.2

## CS Carbon Steel

### • VBPSE

- Type: single pilot operated check valves
- Sizes: from DN6 up to DN50
- Ends: BSP
- Pressure: up to PN350
- Temp range: from -20°C to +100°C
- Treatment: Galvanized

### • VBPDE

- Type: double pilot operated check valves
- Sizes: from DN6 up to DN50
- Ends: BSP
- Pressure: up to PN350
- Temp range: from -20°C to +100°C
- Treatment: Galvanized

### • VBPDE CEXC

- Type: double pilot operated check valves
- Sizes: from DN6 up to DN50
- Ends: BSP
- Pressure: up to PN350
- Temp range: from -20°C to +100°C
- Treatment: Galvanized



## CODE DESCRIPTION STRUCTURE

**VBPSE** **G1/2** **CS**
**Type and way of valve**

VBPSE single pilot operated check valves

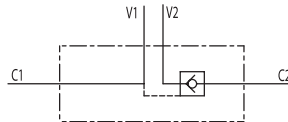
**Ends**

 GAS DIN/  
ISO 228  
BSP

 G 1/4  
G 3/8  
G 1/2  
G 3/4

**Material**

● CS carbon steel


**VBPDE** **G1/2** **CS**
**Type and way of valve**

VBPDE double pilot operated check valves

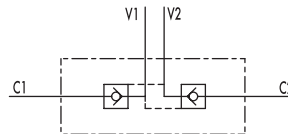
**Ends**

 GAS DIN/  
ISO 228  
BSP

 G 1/4  
G 3/8  
G 1/2  
G 3/4

**Material**

● CS carbon steel


**VBPDE**  
**CEXC** **G1/2** **CS**
**Type and way of valve**

VBPDE CEXC double pilot operated check valves

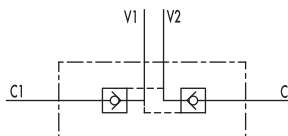
**Ends**

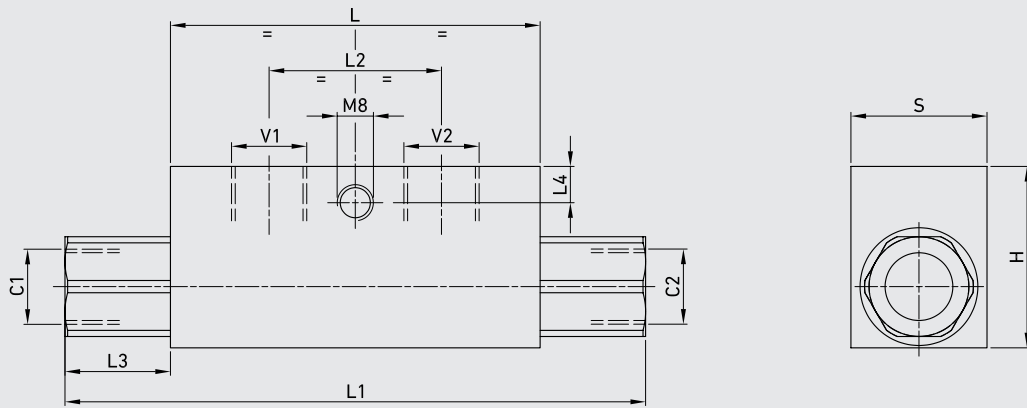
 GAS DIN/  
ISO 228  
BSP

 G 1/4  
G 3/8  
G 1/2  
G 3/4

**Material**

● CS carbon steel





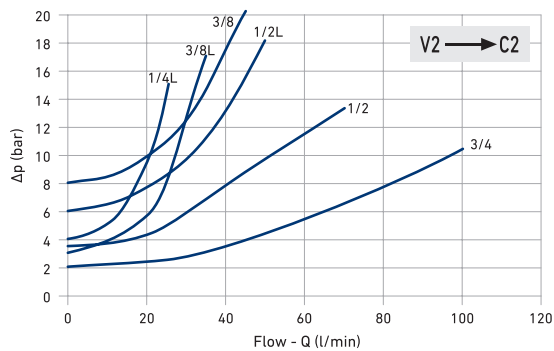
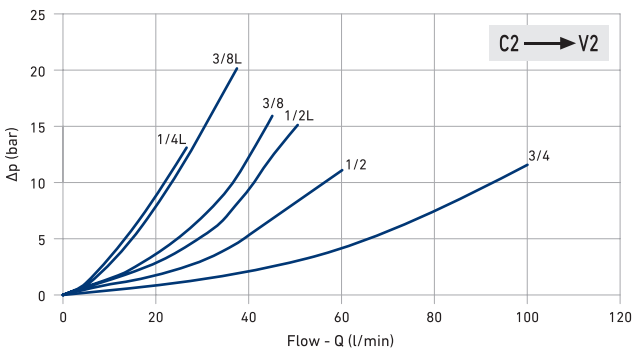
**VBPSE Single pilot operated check valves**

CS  
Carbon Steel

TYPE	V1 - V2 C1 - C2 GAS - MET	MAX PRESSURE	CRACKING PRESSURE	L	L1	L2	L3	L4	H	S	WEIGHT	ITEM CODE		
VBPSE 1/4" L	G 1/4"	MPa	35	0,4	mm	64	106,5	36	18,5	8	40	30	kg 0,612	NVB2G010000
		Psi	5075	58	inch	2,52	4,19	1,42	0,73	0,31	1,57	1,18	lb 1,35	
VBPSE 3/8" L	G 3/8"	MPa	35	0,3	mm	80	120	38	16	8	40	30	kg 0,706	NVB2G020000
		Psi	5075	43,5	inch	3,15	4,72	1,50	0,63	0,31	1,57	1,18	lb 1,56	
VBPSE 1/2" L	G 1/2"	MPa	35	0,6	mm	90	133	45	17	12,5	45	35	kg 0,994	NVB2G030000
		Psi	5075	87	inch	3,54	5,24	1,77	0,67	0,49	1,77	1,38	lb 2,19	
VBPSE 3/4" L	G 3/4"	MPa	35	0,2	mm	100	182	46	36	12	60	40	kg 1,792	NVB2G040000
		Psi	5075	29	inch	3,94	7,17	1,81	1,42	0,47	2,36	1,57	lb 3,95	

**PRESSURE DROP CURVES**

Temperature : 50°C / Oil viscosity: 30cSt





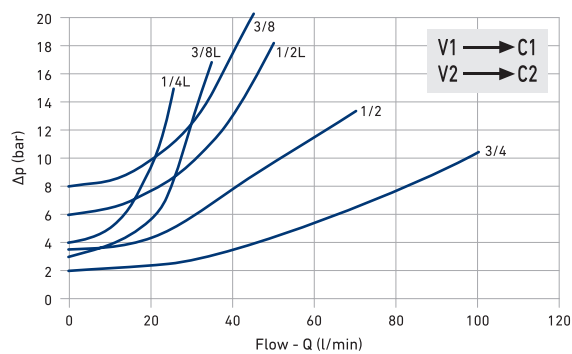
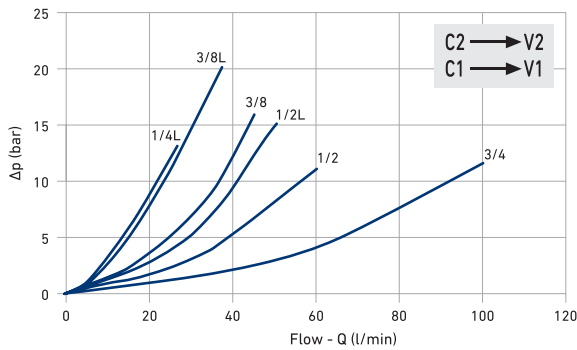
## VBPDE Double pilot operated check valves

**CS**  
Carbon Steel

TYPE	V1 - V2 C1 - C2 GAS - MET	MAX PRESSURE	CRACKING PRESSURE	L	L1	L2	L3	L4	H	S	WEIGHT	ITEM CODE	
VBPDE 1/4"L	G 1/4"	MPa	35	0,4	mm	64	113	36	24,5	8	40	30	kg 0,636
		Psi	5075	58	inch	2,52	4,45	1,42	0,96	0,31	1,57	1,18	lb 1,40
VBPDE 3/8"L	G 3/8"	MPa	35	0,3	mm	80	128	38	24	8	40	30	kg 0,736
		Psi	5075	43,5	inch	3,15	5,04	1,50	0,94	0,31	1,57	1,18	lb 1,62
VBPDE 1/2" L	G 1/2"	MPa	35	0,6	mm	90	142	45	26	12,5	45	35	kg 1,042
		Psi	5075	87	inch	3,54	5,59	1,77	1,02	0,49	1,77	1,38	lb 2,30
VBPDE 3/4" L	G 3/4"	MPa	30	0,2	mm	100	192	46	46	12	60	40	kg 1,916
		Psi	4350	29	inch	3,94	7,56	1,81	1,81	0,47	2,36	1,57	lb 4,22

## PRESSURE DROP CURVES

Temperature : 50°C / Oil viscosity: 30cSt



## VBPDE CEXC Double pilot operated check valves for 12mm pipe mounting din (2353)

TYPE	V1 - V2 C1 - C2 GAS - MET	MAX PRESSURE	CRACKING PRESSURE	L	L1	L2	L3	H	S	WEIGHT		
VBPDE 1/4" L 2 CEXC-10L	G 1/4"	MPa	35	0,7	mm	64	125	36	160	40	30	kg 0,644
		Psi	5075	101,5	inch	2,52	4,92	1,42	6,30	1,57	1,18	lb 1,42
VBPDE 1/4" L 2 CEXC	G 1/4"	MPa	35	0,4	mm	64	130	36	160	40	30	kg 0,648
		Psi	5075	58	inch	2,52	5,12	1,42	6,30	1,57	1,18	lb 1,43
VBPDE 3/8" L 2 CEXC	G 3/8"	MPa	35	0,4	mm	64	130	36	166	40	30	kg 0,630
		Psi	5075	58	inch	2,52	5,12	1,42	6,54	1,57	1,18	lb 1,39

## PRESSURE DROP CURVES

Temperature : 50°C / Oil viscosity: 30cSt

