



# FFAP

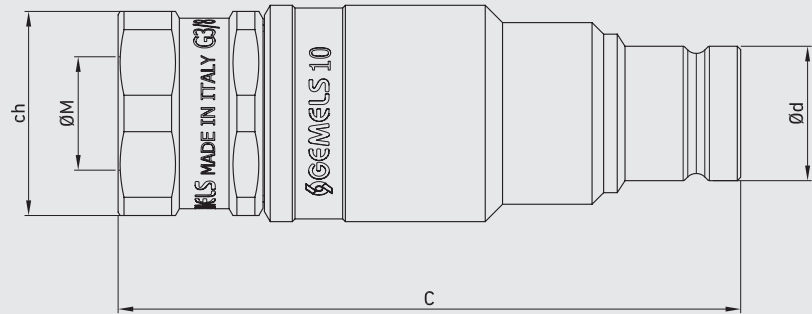
## ISO 16028 - FLAT FACE CONNECTION UNDER PRESSURE

Edition. 21.5

### CS Carbon Steel

- Type: Quick Couplings
- Models: ISO 16028
- Sizes: from DN6 up to DN25
- Pressure: up to PN420
- Treatment: Galvanized

Male



Available also in patented version: ball valve with integrated quick coupling.



CODE DESCRIPTION STRUCTURE

**QC** | **G 1/2** | **M** | **DN12,5** | **1** | **B**

Type of coupling

FFAP FLAT FACE

Ends

ISO 1179-1	ASME	ISO 11926-1
BSPP	B1.20.1 NPT	(SAE J1926-1) ORB
G 3/8	N 3/8	SAE6
G 1/2	N 1/2	SAE8
G 1/2	N 1/2	SAE8
G 3/4	N 3/4	SAE12
G 3/4	N 3/4	SAE12
G1	N 1	SAE16
G1	N1	SAE16
G1 1/4	N1 1/4	SAE20
G1 1/2	N1 1/2	/

MALE

DN/ISO

- 10
- 10
- 12,5
- 12,5
- 19
- 19
- 25
- 25
- 25

Body Material

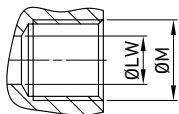
- 1 = 1,0737

Seal material

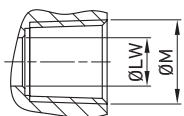
- B = NBR E = FKM\*



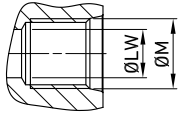
\*On request  
• Plugs


**QUICK COUPLINGS FLAT FACE CONNECTION UNDER PRESSURE (FFAP) (male)  
FEMALE THREAD ISO 1179-1 BSPP**

TYPE	DN	PN		C	Ød	ch	ØM	WEIGHT		ITEM CODE
								kg	lb	
QC FFAP G 3/8 MALE	10	MPa 42	mm 91,5	19,75	30	G 3/8		kg 0,3	NC13G020000	
		Psi 6090	inch 3,60	0,78				lb 0,66		
QC FFAP G 1/2 MALE	10	MPa 42	mm 95,6	19,75	30	G 1/2		kg 0,45	NC13G020001	
		Psi 6090	inch 3,76	0,78				lb 0,99		
QC FFAP G 1/2 MALE	12,5	MPa 42	mm 103	24,5	34	G 1/2		kg 0,65	NC13G030000	
		Psi 6090	inch 4,06	0,96				lb 1,43		
QC FFAP G 3/4 MALE	12,5	MPa 42	mm 106	24,5	34	G 3/4		kg 0,7	NC13G030001	
		Psi 6090	inch 4,17	0,96				lb 1,54		
QC FFAP G 3/4 MALE	19	MPa 35	mm 128,5	29,95	41	G 3/4		kg 0,85	NC13G040000	
		Psi 5075	inch 5,06	1,18				lb 1,87		
QC FFAP G 1 MALE	19	MPa 35	mm 132	29,95	41	G 1		kg 0,9	NC13G040001	
		Psi 5075	inch 5,20	1,18				lb 1,98		
QC FFAP G 1 MALE	25	MPa 35	mm 143	36	50	G 1		kg 1,35	NC13G050000	
		Psi 5075	inch 5,63	1,42				lb 2,98		
QC FFAP G 1 1/4 MALE	25	MPa 35	mm 145,7	36	50	G1 1/4		kg 1,4	NC13G050001	
		Psi 5075	inch 5,74	1,42				lb 3,09		
QC FFAP G 1 1/2 MALE	25	MPa 35	mm 145,7	36	55	G1 1/2		kg 1,45	NC13G050002	
		Psi 5075	inch 5,74	1,42				lb 3,20		


**QUICK COUPLINGS FLAT FACE CONNECTION UNDER PRESSURE (FFAP) (male)  
FEMALE THREAD ASME B1.20.1 NPT**

TYPE	DN	PN		C	Ød	ch	ØM	WEIGHT		ITEM CODE
								kg	lb	
QC FFAP N 3/8 MALE	10	MPa 42	mm 93,5	19,75	30	N 3/8		kg 0,3	NC13N020000	
		Psi 6090	inch 3,68	0,78				lb 0,66		
QC FFAP N 1/2 MALE	10	MPa 42	mm 98,3	19,75	30	N 1/2		kg 0,45	NC13N020001	
		Psi 6090	inch 3,87	0,78				lb 0,99		
QC FFAP N 1/2 MALE	12,5	MPa 42	mm 103	24,5	34	N 1/2		kg 0,65	NC13N030000	
		Psi 6090	inch 4,06	0,96				lb 1,43		
QC FFAP N 3/4 MALE	12,5	MPa 42	mm 106	24,5	34	N 3/4		kg 0,7	NC13N030001	
		Psi 6090	inch 4,17	0,96				lb 1,54		
QC FFAP N 3/4 MALE	19	MPa 35	mm 128,5	29,95	41	N 3/4		kg 0,85	NC13N040000	
		Psi 5075	inch 5,06	1,18				lb 1,87		
QC FFAP N 1 MALE	19	MPa 35	mm 132	29,95	41	N 1		kg 0,9	NC13N040001	
		Psi 5075	inch 5,20	1,18				lb 1,98		
QC FFAP N 1 MALE	25	MPa 35	mm 143	36	50	N 1		kg 1,35	NC13N050000	
		Psi 5075	inch 5,63	1,42				lb 2,98		
QC FFAP N 1 1/4 MALE	25	MPa 35	mm 145,7	36	50	N1 1/4		kg 1,4	NC13N050001	
		Psi 5075	inch 5,74	1,42				lb 3,09		
QC FFAP N 1 1/2 MALE	25	MPa 35	mm 145,7	36	55	N1 1/2		kg 1,45	NC13N050002	
		Psi 5075	inch 5,74	1,42				lb 3,20		



## QUICK COUPLINGS FLAT FACE CONNECTION UNDER PRESSURE (FFAP) (male) FEMALE THREAD ISO 11926-1 (SAE J1926-1) ORB

										CS Carbon Steel
TYPE	DN	PN		C	$\varnothing d$	ch	$\varnothing M$	WEIGHT		ITEM CODE
QC FFAP SAE6 MALE	10	MPa 42	mm 92,6	19,75	30	9/16-18 UNF		kg 0,3	NC13S020000	
		Psi 6090	inch 3,65	0,78				lb 0,66		
QC FFAP SAE8 MALE	10	MPa 42	mm 95,6	19,75	30	3/4-16 UNF		kg 0,45	NC13S020001	
		Psi 6090	inch 3,76	0,78				lb 0,99		
QC FFAP SAE8 MALE	12,5	MPa 42	mm 103	24,5	34	3/4-16 UNF		kg 0,65	NC13S030000	
		Psi 6090	inch 4,06	0,96				lb 1,43		
QC FFAP SAE12 MALE	12,5	MPa 42	mm 108,5	24,5	34	1-1/16-12 UN		kg 0,7	NC13S030001	
		Psi 6090	inch 4,27	0,96				lb 1,54		
QC FFAP SAE12 MALE	19	MPa 35	mm 130	29,95	41	1-1/16-12 UN		kg 0,85	NC13S040000	
		Psi 5075	inch 5,12	1,18				lb 1,87		
QC FFAP SAE16 MALE	19	MPa 35	mm 132	29,95	41	1 5/16-12 UN		kg 0,9	NC13S040001	
		Psi 5075	inch 5,20	1,18				lb 1,98		
QC FFAP SAE16 MALE	25	MPa 35	mm 143	36	50	1 5/16-12 UN		kg 1,35	NC13S050000	
		Psi 5075	inch 5,63	1,42				lb 2,98		
QC FFAP SAE20 MALE	25	MPa 35	mm 145,7	36	50	1 5/8-12 UN		kg 1,4	NC13S050001	
		Psi 5075	inch 5,74	1,42				lb 3,09		